

---

# QRPme.com

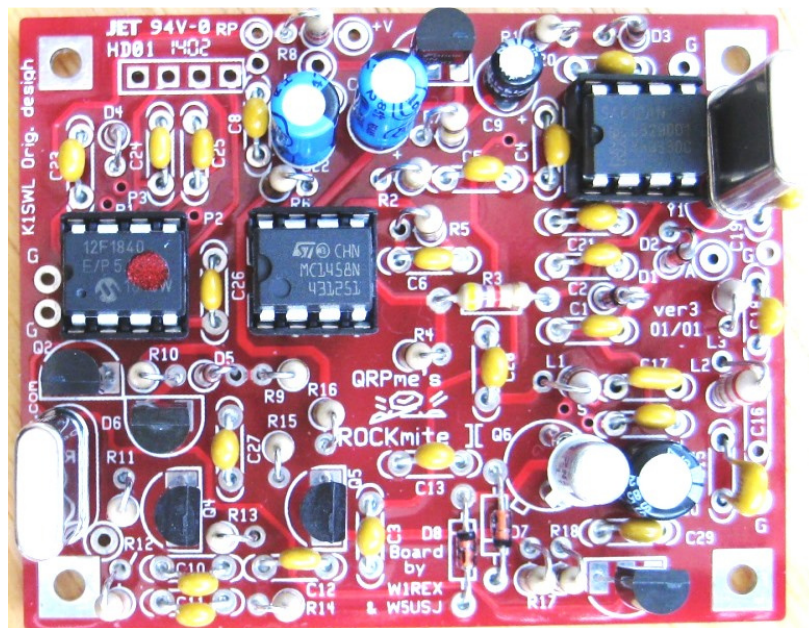
---

## Rockmite ][ Transceiver

---

By: Rex Harper, W1REX

---



Shown with Q6 socketed and without required heatsink

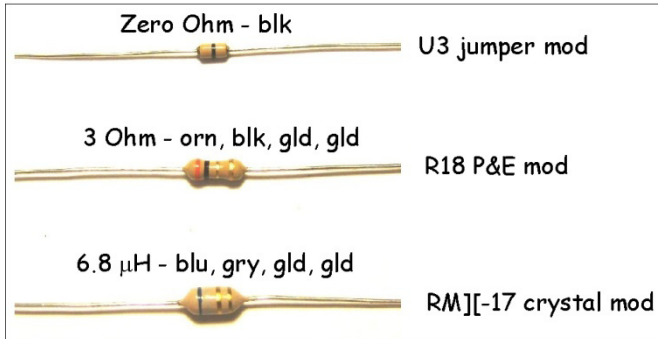
***Rockmite ][ Builder's Guide v3 PCB***

# Rockmite][ v3 Addendum

## Changes, Updates, Revisions and Component Identification

**Note:** Completely read the Builders Guide and Builders Help manuals before beginning assembly of the kit!

### Component Identification



The zero Ohm “resistor” is used to provide an insulated jumper for the U3 trace modification

The 3 Ohm resistor is used at component location R18 for the Power and Efficiency modification

The 6.8  $\mu$ H choke is used in series with an 18.096 MHz crystal for an RM][ -17 modification. The purpose is to pull the crystal lower in frequency to a more active part of the 17 meter band.

2N3866

Markings or similar on the house-marked parts



### U1-5 to C4/C5 Trace Mod (v3 PCB Only)

Note: Only 1 lead on the two components is soldered for this illustration. This so the parts could be easily removed and the pads cleaned out.

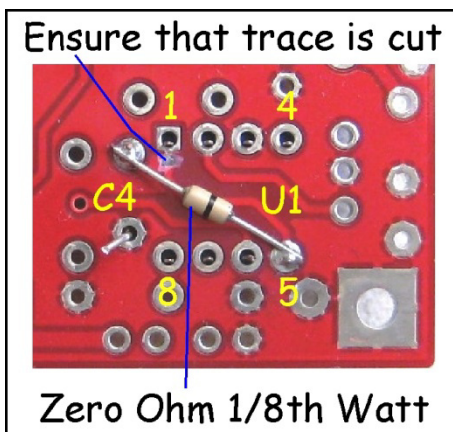
Procedure:

Cut or ensure that the trace between U1-5 and U1-1 is cut.

Use care that no adjacent traces are cut.

Position the 0-Ohm jumper centered between U1-5 and the end pad of C4 at the C4/C5 junction.

A small piece of clear tape would help hold the jumper in place.



Solder (tack-solder) the jumper at the U1-5 end and trim the wire. Ensure that no shorts to other pins or pads have occurred.

Connect the other end of the jumper to the C4 pad and trim the wire. Remove the tape if used.

Continue the assembly per the *Builders Guide*

# The Rockmite ][ v3 a Simple Transceiver

## List of Material (LoM)

Qty.	Ref. Designator	Component	Description
3	<a href="#">C1, C2, C10, C11, C12</a>	<a href="#">Band Specific</a>	<a href="#">See page 2 Band Table</a>
5	<a href="#">C15, C16, C17, C18, C19</a>	<a href="#">Band</a>	
5	<a href="#">C15, C16, C17, C18, C19</a>	<a href="#">Band</a>	
3	<a href="#">D3, D4, D5</a>	<a href="#">Band</a>	
3	<a href="#">L1, L2, L3</a>	<a href="#">Band</a>	
2	<a href="#">Y1, Y2</a>	<a href="#">Band</a>	Crystals
4	C6, C24, C25, C26	100 pF disk or mono. cap	'101' or '101J'
5	C3, C13, C20, C21, C27	.01 uF disk cap	'103', ceramic
1	C4	.022 uF monolithic cap	'223', epoxy case
6	C5, C8, C14, C23, C28, C29	.1 uF monolithic	'104', epoxy case
1	C9	3.3 uF electrolytic cap	
2	C7, C22	47 uF electrolytic cap	
1	C30	47 uF electrolytic cap	low-profile case
4	D1, D2, D7, D8	1N4148 diode	Alt. 1N914
1	D9	1N5818	Polarity protection
1	D6	MVAM-109 varicap diode	
1	HS1	TO-18 or Alt TO-5	<i>see text</i>
1	LED Green	Power on Indicator	See modification sheet
2	3-pad MeSquares	Mod interconnection	
1	R0 Zero ohm Jumper	U1 trace fix jumper	Black band
1	R5 (Volume Pot)	1 Meg ohm linear	Optional Volume R5
1	R2 (Speed Pot)	50k ohm linear	See Keyer Manal
1	R18 (Power Mod)	3 ohm resistor	Brown-blk-gold-gold
2	R6, R18	10 ohm resistor	Brown-blk-blk-gold
3	R14, R16, R17	100 ohm resistor	Brown-blk-brn-gold
4	R1, R8, R13 R for LED	1K ohm resistor	Brown-blk-red-gold
2	R1, R8 for 9V operation	470 ohm – see text	Yel-violet-brn-gold
4	R2, R3, R9 (R1 for Speed)	4.7K ohm resistor	Ylw-violet-red-gold
1	R12	22K resistor	Red-red-org-gold
3	R11, R15 (R3 for Speed)	47K resistor	Ylw-violet-org-gold
2	R7, R10	100K resistor	Brown-blk-ylw-gold
2	R4, R5	1 M resistor	Brown-blk-green-gold
3	Q1, Q2, Q3	<b>2N7000 transistor</b>	(TO-92 package)
2	Q4, Q5	2N4401 transistor	(TO-92 package)
1	Q6	2N2222A TO-18 transistor	Alt. 2N3866 TO-5
1	U1	SA612/602AD IC	<i>in semiconductor bag</i>
1	U2	MC1458, LM1458 IC	8-pin DIP IC
1	U3 pre-programmed	<b>12F1840S keyer Chip</b>	8-pin DIP IC,
3	--	8-pin IC socket	
1	SIP socket strip	10-pin strip	Crystal, Q6 sockets +1
1	--	2-1/2" RG-174/U coax	
1	--	Printed circuit board	WIREX Ver 3 PCB

Notes: Items in gray shading are in antistatic bag and those 2 items *in bold (above) are static-sensitive.*

# LoM Continued

## Band Specific Components

Ref.	Band Table			
	80	40	30	20
C1	47pF C0G Mono (470)	47pF C0G Mono (470)	33pF C0G Mono (330)	47pF C0G Mono (470)
C2	33pF C0G Mono (330)	47pF C0G Mono (470)	33pF C0G Mono (330)	47pF C0G Mono (470)
C10, C11	68pF C0G Mono (680)	68pF C0G Mono (680)	47pF C0G Mono (470)	39pF C0G Mono (390)
C12	47pF C0G Mono (470)	47pF C0G Mono (470)	33pF C0G Mono (330)	39pF C0G Mono (390)
C15, C19	560pF C0G Mono (561)	470pF C0G Mono (471)	330pF C0G Mono (331)	220pF C0G Mono (221)
C16	Future Option	Future Option	Future Option	Future Option
C17	1200pF C0G Mono (122)	1000pF C0G Mono (102)	680pF C0G Mono (681)	470pF C0G Mono (471)
C18	240pF C0G Mono (241)	120pF C0G Mono (121)	82pF C0G Mono (820)	68pF C0G Mono (680)
D3	1N5231B 5.1V Zener	1N5231B 5.1V Zener	1N5231B 5.1V Zener	1N5233B 6 V Zener
D4	1N5231B 5.1V Zener	1N5231B 5.1V Zener	1N5231B 5.1V Zener	1N5230B 4.7 V Zener
D5	Not Used	1N5236B 7.5V Zener	1N5231B 5.1V Zener	1N5230B 4.7 V Zener
L1	15 uH RF Choke	10 uH Choke	6.8 uH RF Choke	4.7 uH RF Choke
L2, L3	2.2 uH RF Choke	1 uH Choke	0.68 uH RF Choke	0.47 uH RF Choke
Y1, Y2	Standard 3.560, 3.579545 MHz crystals	Standard 7.030, 7.040 MHz crystals or specify from list	Standard 10.106, 10.116 MHz crystals	Standard 14.050, 14.060 MHz crystals
The following items, from the original Rock-Mites, are listed here for reference only				
Series Filter (Ref.)	330 pF + 5.6 uH RFC	150 pF + 3.3 uH RFC	82 pF + 3.3 uH RFC	82 pF + 1.5 uH RFC

The series filter values were used in the original SWL RMs to meet -43dB FCC spurious suppression requirements.

## Connection Hookup Components

- BNC Antenna Jack
- Coaxial Power Jack
- Coaxial Power Plug
- 1N5818 Polarity Diode (D9)
- Stereo Jacks, Paddle and Audio Knob (optional)
- Potentiometer, 1 meg (optional)
- Push Button Switch
- Power Wire
- 10-Conductor Ribbon – Hook up

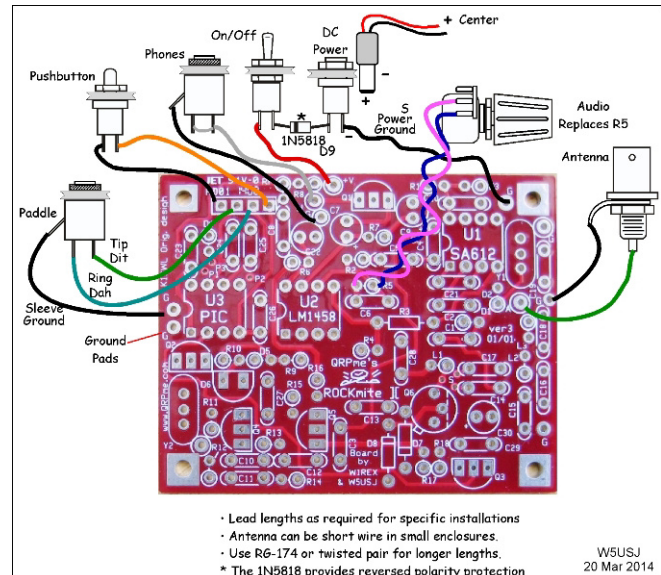
## Crystal Grounding Option



For easy frequency changing use 3-pin SIP sockets at Y1 and Y2.

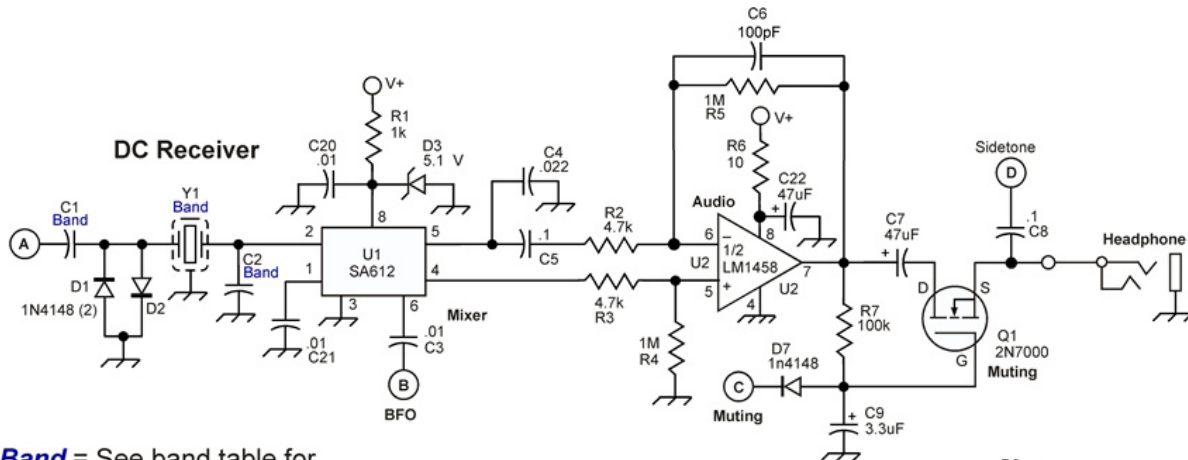
Add center ground lead to crystal as shown above. See **RM ][ v3 Builders Help, pg 10**.

**Note:** SIP sockets will raise the height of the crystals and may limit use in mint tins and the MityBox. Leaving the leads long, the crystals can be bent over to fit the enclosures. Also, QRPme has some short, HC49S, crystal frequencies.

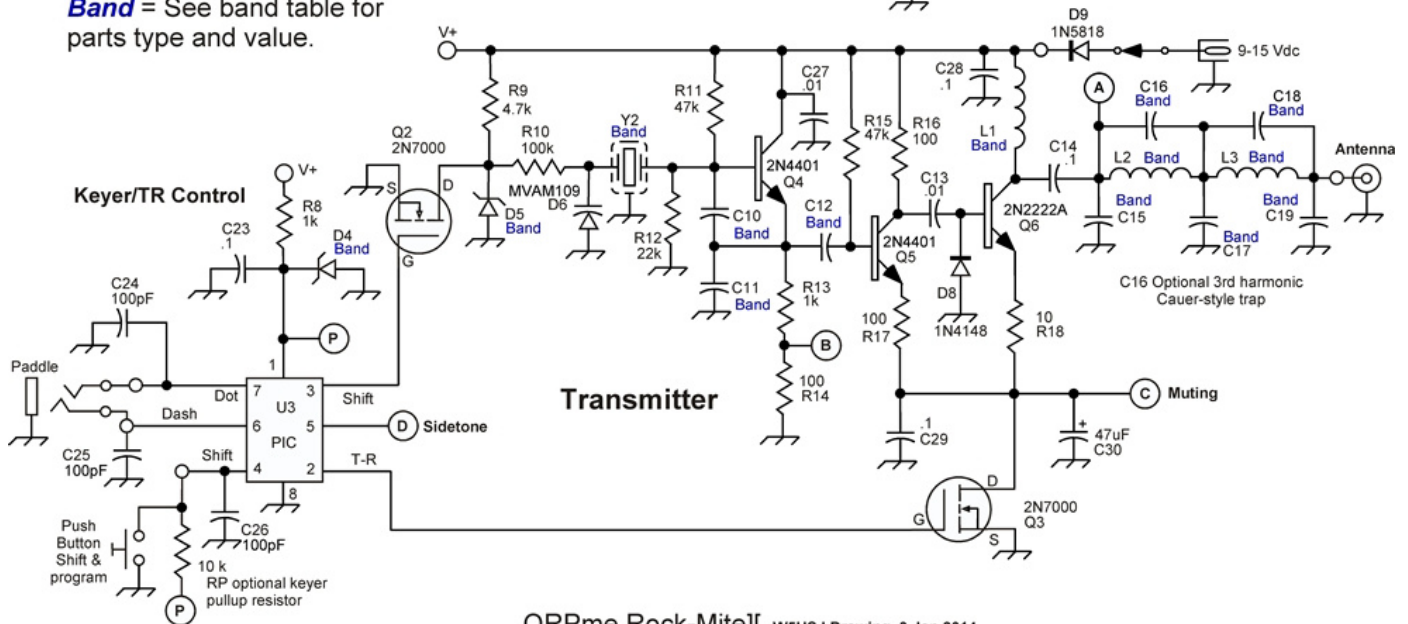


Basic wiring with optional volume control in place of R5.  
See *supplement* pages for CR-425 enclosure assembly.

# Schematic Drawing



**Band** = See band table for parts type and value.



QRPme Rock-Mite][ W5USJ Drawing 3 Jan 2014





- Remaining parts may be installed without regard to sequence. It may be helpful to note the tight clusters of parts and install those first. Install ICs in the sockets as shown above- see the supplement for orientation info.

## ***Rockmite ][ operation:***

The Rockmite ][, using parallel resonant crystals, operates on approximately **0.5 to 1.5 kHz lower** than the crystal's marked frequency. The microcontroller provides a 'shift' signal to the local oscillator. This signal changes state upon key-down and key-up and provides approximately 700 Hz frequency shift (FSK). For series resonant crystals, the opposite is true.

The Rockmite ][ includes a supplied Iambic Keyer, U3. Refer to the Picokeyer-RM ][ manual for detailed operating instructions

If either the Dot or Dash inputs is grounded upon power-up, the keyer function is bypassed and the other input accepts a straight-key or external keyer. This is achieved automatically by the use of a 3-conductor jack and 2-conductor (monaural) plug. Alternately, refer to the Straight Key Mode in the keyer manual.

Third Party Keyers:

RMK from Jackson Harbor <http://wb9kzy.com/rmk.htm> A keyer chip with basic features and functions

PicoKeyerRM from HamGadgets

[http://www.hamgadgets.com/index.php?main\\_page=product\\_info&cPath=21&products\\_id=48](http://www.hamgadgets.com/index.php?main_page=product_info&cPath=21&products_id=48)

A full-featured keyer chip with extended features and functions.

Visit the respective website for a copy of the manual describing the features and functions of these two keyers.

## **'Pushbutton' Input**

- A brief (<250 ms) closure to ground on the 'switch' input reverses the offset to provide a second operating frequency.  
**Frequency selection:** When you wish to work another station, use this function to select the higher of the two pitches on a received signal. Note that the pitch at the other setting is a measure of how close to zero-beat you are; ideally it would be just a low-frequency 'thump'. If the two selections yield 'high' and 'higher' you probably won't be able to work the other station.
- For the original SWL Rock-Mite keyer chip only (12C508A), a longer (>250 ms) closure to ground on the 'switch' input puts the keyer in a speed-adjustment mode. The Rockmite ][ outputs a Morse code "S" to acknowledge entry into this mode. Tapping (or holding) the dot paddle speeds up the keyer; the same operations on the dash paddle slow it down. The default (power-up) speed is approximately 16 WPM and the upper and lower limits are ~40 WPM/5WPM. If no dot/dash inputs are received over an interval of ~1.5 seconds, the Rockmite ][ outputs a lower-frequency tone and reverts to normal operation. *The Morse "S" and subsequent tones are not transmitted on the air.*

*Design modifications may be found in the Rockmite ][ Builder's Help and on-line at the URLs below.*

### **On-Line Resources:**

Modifications and tips: <http://www.qsl.net/n0rc/rm/>

Yahoo Rockmite Group:

[http://groups.yahoo.com/neo/groups/Rock-Mite\\_Group/](http://groups.yahoo.com/neo/groups/Rock-Mite_Group/) Approval with Valid Call and Real Name only.

Missing Parts : Rex Harper W1REX [tunacankits@gmail.com](mailto:tunacankits@gmail.com)

This document is based on the original Rock-Mite Instructions by Dave Benson, K1SWL.

Edited by: Chuck Carpenter, W5USJ

Copyright 2013: Rex Harper, W1REX, QRPme.com

All rights reserved.

\* \* \*